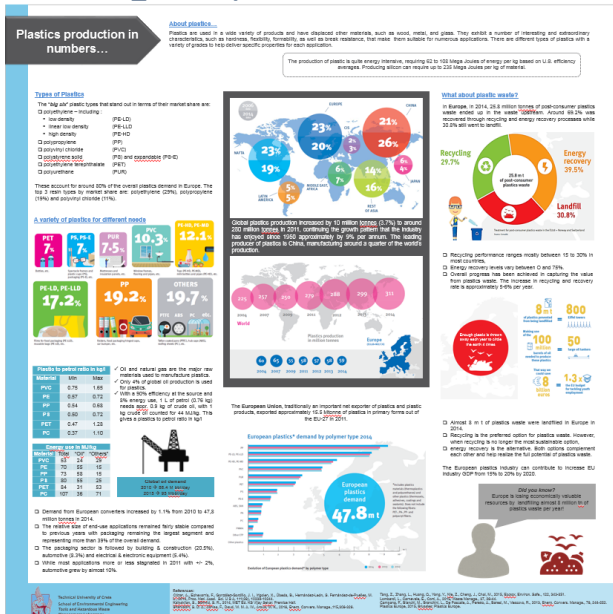




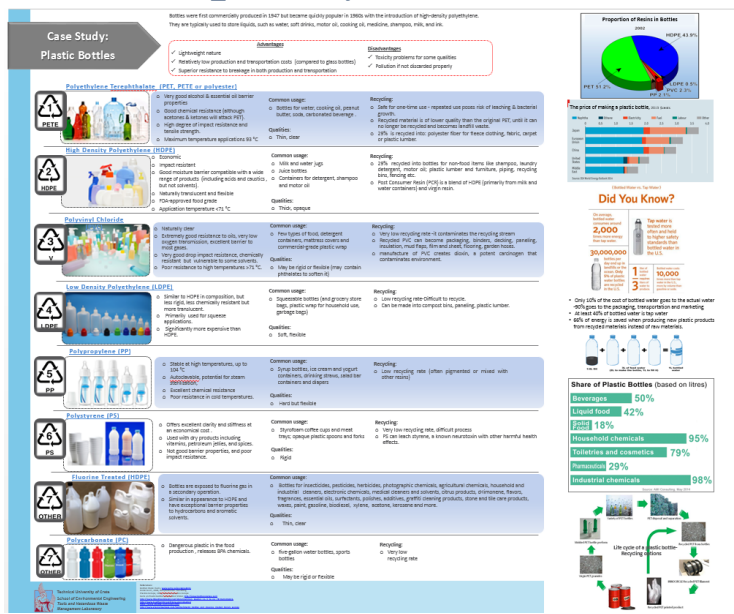
Exhibition on “PLASTIC WASTE POLLUTION” & “ENVIRONMENTAL EFFECTS”

During “CRETE 2016”, an exhibition focusing on the deleterious effects of plastic waste pollution on the environment took place at the conference venue. General aspects of global plastic production including statistical approaches, toxicity effects, and marine pollution by plastic debris, and worldwide management practices were presented by bringing together most of the literature published so far on the topic. Practices for production minimization, innovative techniques for recycling and recovery as well as a guide of personal choices were also debated. The exhibition was organized and created by the School of Environmental Engineering of the Technical University of Crete (Laboratory of Toxic and Hazardous Waste Management).

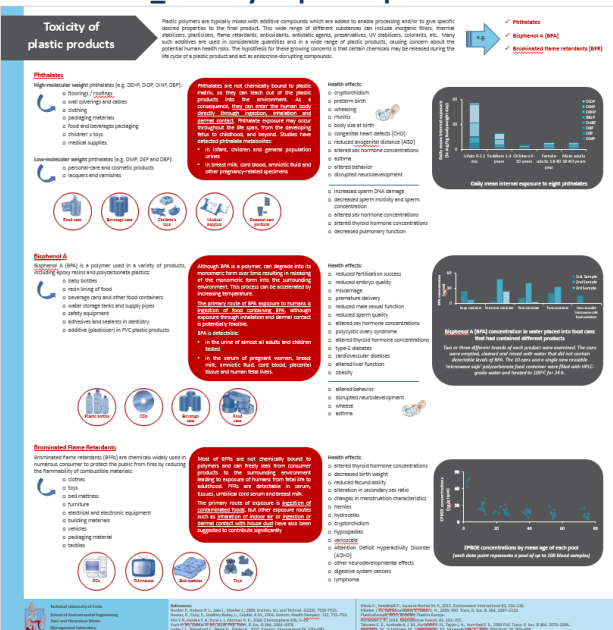
1_Plastic production in numbers



2_Case study: Plastic bottles



3_Toxicity of plastic products



4_Potential for plastics production minimization

